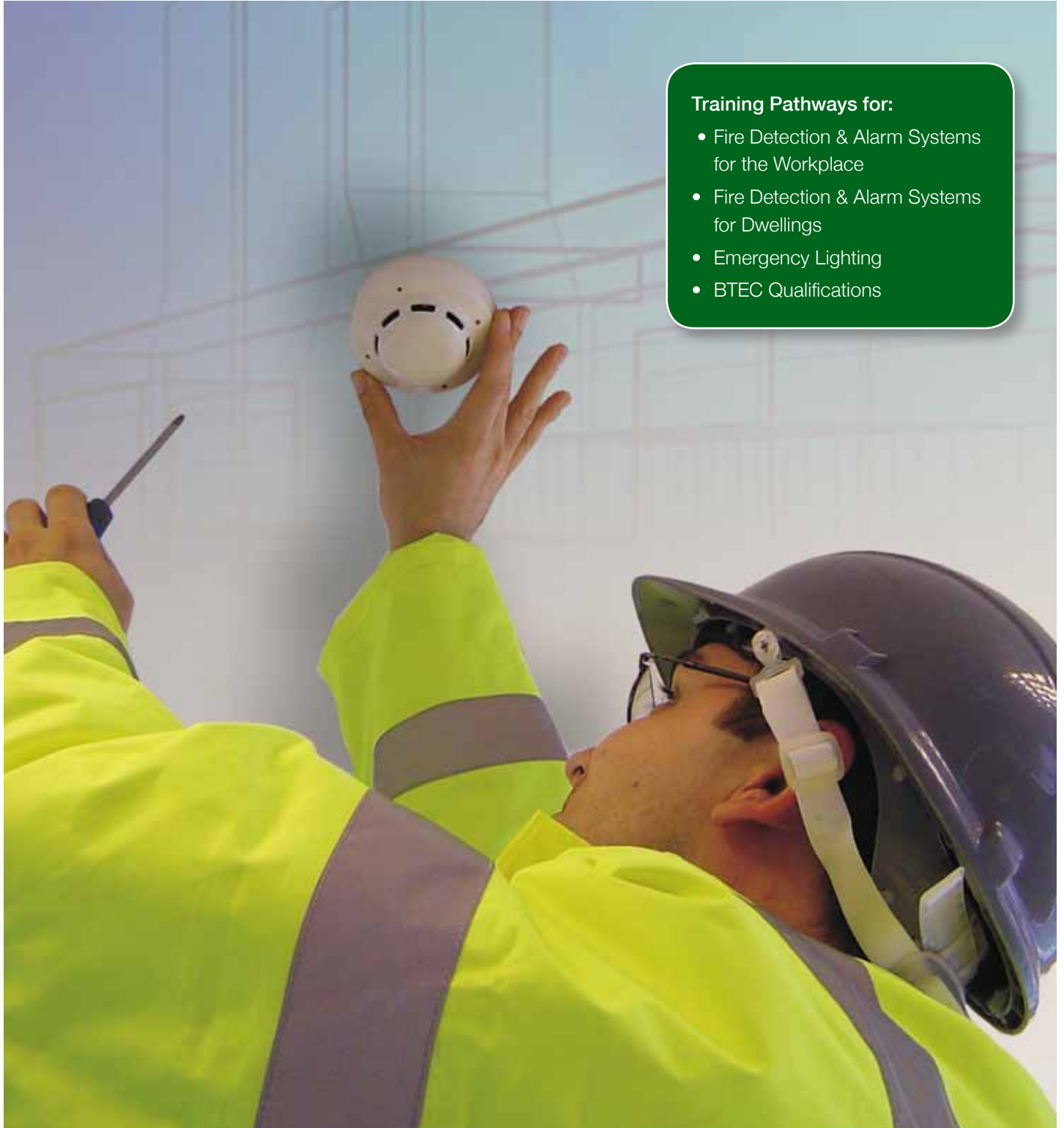




Training in Fire Detection, Alarms and Emergency Lighting



Training Pathways for:

- Fire Detection & Alarm Systems for the Workplace
- Fire Detection & Alarm Systems for Dwellings
- Emergency Lighting
- BTEC Qualifications

Welcome

Develop knowledge of fire detection, alarms and emergency lighting and progress on to our new BTEC qualifications available at Levels 2, 3 or 4



Unrivalled choice and accreditation

Welcome to our comprehensive suite of new, modular training courses in fire detection, alarms and emergency lighting systems. Developed through a partnership between the Fire and Security Association and Fire Protection Association they offer the first qualifications of its kind for the sector.

Some highlights to look out for in our new prospectus:

- new BTEC qualifications available at levels 2, 3 and 4
- Level 3 and Level 4 all-inclusive packages
- evidence of high quality training for third party certification bodies
- apply your learning in the workplace with work-based assignments
- demonstrate your competency to clients, employers and regulatory bodies

Our credentials speak for themselves:

- we are an Institution of Fire Engineers (IFE) Approved Training Centre
- we have significant experience of delivering fire safety training, from major blue chip companies to the public sector and SMEs
- we operate a quality management system in accordance with BS/EN/ISO 9001, assessed and approved by Lloyds Register
- we are a constituent member of the Confederation of Fire Protection Associations Europe (CFPA Europe)
- we are a NEBOSH Accredited Centre
- we are an Edexcel Accredited Centre
- we have achieved the Investors in People Award
- the majority of our courses offer CPD points

I would be very pleased to discuss, without obligation, any fire safety training needs that you may have in this area and hope that you will consider using the FPA for your training and development needs.



Sue Tyley, Associate Director, Training
Email: styley@thefpa.co.uk

Contents

Introduction	2
BTEC Qualifications	3
Fire Detection & Alarm Systems BTEC Qualification Pathway	4
Emergency Lighting BTEC Qualification Pathway	5
Fire Detection & Alarm Systems for the Workplace Pathway 1	6–7
Fundamentals of Fire Detection & Alarm Systems	8–9
Fire Detection & Alarm Systems for the Workplace Pathway 1 Modules	10–13
Fire Detection & Alarm Systems for Domestic Dwellings Pathway 2	14–15
Fire Detection & Alarm Systems for Dwellings Pathway 2 Modules	16–19
Emergency Lighting Pathway 3	20–21
Fundamentals of Emergency Lighting & Fire Legislation	22–23
Emergency Lighting Pathway 3 Modules	24–27
Booking Form	28



Head Office

Fire Protection Association
London Road
Moreton in Marsh
Gloucestershire
GL56 0RH

T: +44 (0)1608 812 500
F: +44 (0)1608 812 501
E: training@thefpa.co.uk
www.thefpa.co.uk

Introduction

Background

This comprehensive suite of modular training courses in Fire Detection & Alarm Systems and Emergency Lighting has been developed through a partnership between the Fire and Security Association (FSA), a division of the Electrical Contractors Association (ECA) and the Fire Protection Association, and is designed to meet the training requirements of those involved with design, installation, commissioning and servicing of associated systems.

All of these courses have received external accreditation from the awarding body, Edexcel. Successful delegates can achieve a BTEC Award or Certificate which acts to confirm to clients, employers, regulatory and certification bodies the level and breadth of competence of an individual.

Extensive choice

The modular structure of the training programme reflects the needs of companies and/or individuals to develop and demonstrate competence:

- in different aspects of systems i.e. design, installation, commissioning and/or servicing
- for different types of premises i.e. simple or complex workplaces/dwellings
- for different job roles i.e. those who work under supervision or those who supervise/manage projects

Find your pathway

All training pathways commence with a core module. You are then able to select the pathway modules that best suit your competency requirements resulting in a training pathway tailored to your needs. Gone is the 'one course fits all' approach.

You will be able to clearly demonstrate to customers and/or employers evidence of training matched against:

- the National Occupational Standards in Systems
- relevant British Standards
- SP203 for Fire Detection & Alarm Systems
- relevant legislation and guidance
- a sector competence matrix agreed by sector employers

Routes to Qualifications

In response to demand from the sector, the FPA and FSA have introduced a brand new qualification pathway for those working in the fire detection, alarms and emergency lighting sector.

BTEC Qualification

Each of the course modules can be combined with a work-based assignment to achieve a **BTEC Award** at Level 2, 3 or 4 in any individual discipline. The modules can also be grouped together to achieve a full **BTEC Level 3 Award for Simple Premises** or a full **BTEC Level 4 Certificate for Complex Premises**.

The first of its kind, this new qualification pathway offers external certification to confirm your level of competence. **See pages 4/5 for more information.**

Links to professional memberships

All the courses featured in this brochure result in an FPA/FSA Certificate, approved by the **Institution of Fire Engineers**.

The Institution of Fire Engineers

The IFE provides professional recognition for fire engineers across a broad spectrum and has achieved recognition from a number of professional bodies, including Engineering Council UK which regulates the engineering profession in the UK.



BTEC Qualifications

New BTEC Qualifications

The FPA and FSA are delighted to introduce this brand new qualification pathway for those working in the fire detection, alarms and emergency lighting systems sector. The first qualification of its kind for the industry, it opens up progression routes through to a Level 4 Certificate and offers the workforce opportunities to achieve nationally recognised qualifications across the range of functions and premises that make up the sector.

What is a BTEC?

BTEC qualifications have been running for twenty-five years and are offered by the Edexcel awarding organisation. BTEC stands for the 'Business and Technology Education Council' and in 2010 more than one million students enrolled on a BTEC course. Level 2, 3 and 4 BTEC qualifications are work related qualifications which aim both to accommodate the needs of employers and to allow progression to university. They provide work related learning with key theoretical background, and are based on relevant National Occupational Standards (NOS) as determined by sector skills councils.

How can I achieve a BTEC Qualification?

Each of the modular training courses provides the underpinning knowledge for a BTEC qualification. Following successful completion of a course, you will then be asked to complete a work-based assignment in order to provide evidence of your competence in applying the skills and knowledge gained on the course. The assignment will be based upon tasks and projects that occur within your daily work schedule. You will have a nominated FPA tutor to help you with any queries that may arise.

Upon successful completion of the work-based assignment you can either claim a single BTEC Award or complete further modules to build up a number of individual BTEC Awards. If you complete all of the modules at Level 3 you can achieve an overarching BTEC Award for Simple Premises or at Level 4 a BTEC Certificate for Complex Premises.

Are there any modules that are compulsory?

You must always attend the core Foundation course relevant to your chosen pathway and any other training days linked to the BTEC qualification that you wish to achieve.

To achieve a Level 3 BTEC qualification, you must first complete the Level 2 BTEC assignments. To achieve a Level 4 BTEC qualification, you must have attended the **Level 2 and Level 3 training days** but can choose to start with the **Level 3 BTEC assignments** or go straight to **Level 4 assignments**.

What level of qualification can I achieve?

The BTEC Award is available at Intermediate (L2), Advanced (L3) and Professional (L4) level.

The BTEC Certificate is available at Professional (L4) level.

Can I register for an individual Award?

You can register for the full BTEC Award or Certificate, details shown on page 4 or you can register for individual BTEC Awards.

Individual BTEC Awards at Level 2 cost £96 plus the cost of associated training modules

Individual BTEC Awards at Level 3 cost £140 plus the cost of associated training modules

Individual BTEC Awards at Level 4 cost £186 plus the cost of associated training modules

If you would like help or advice in choosing the right course for you please contact us for an informal and confidential discussion.

By phone: 01608 812 500

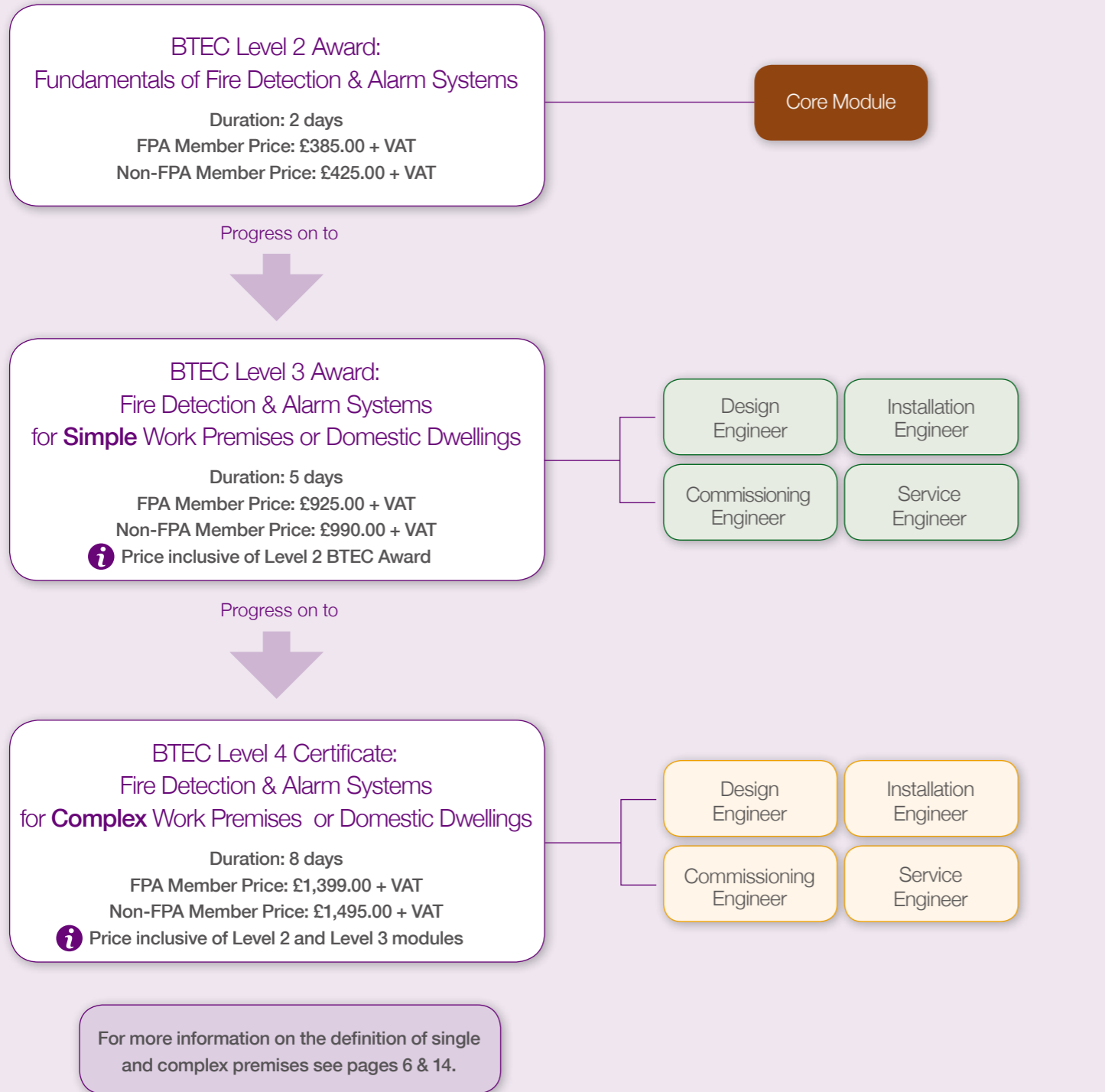
E-mail: training@thefpa.co.uk

By fax: 01608 812 501

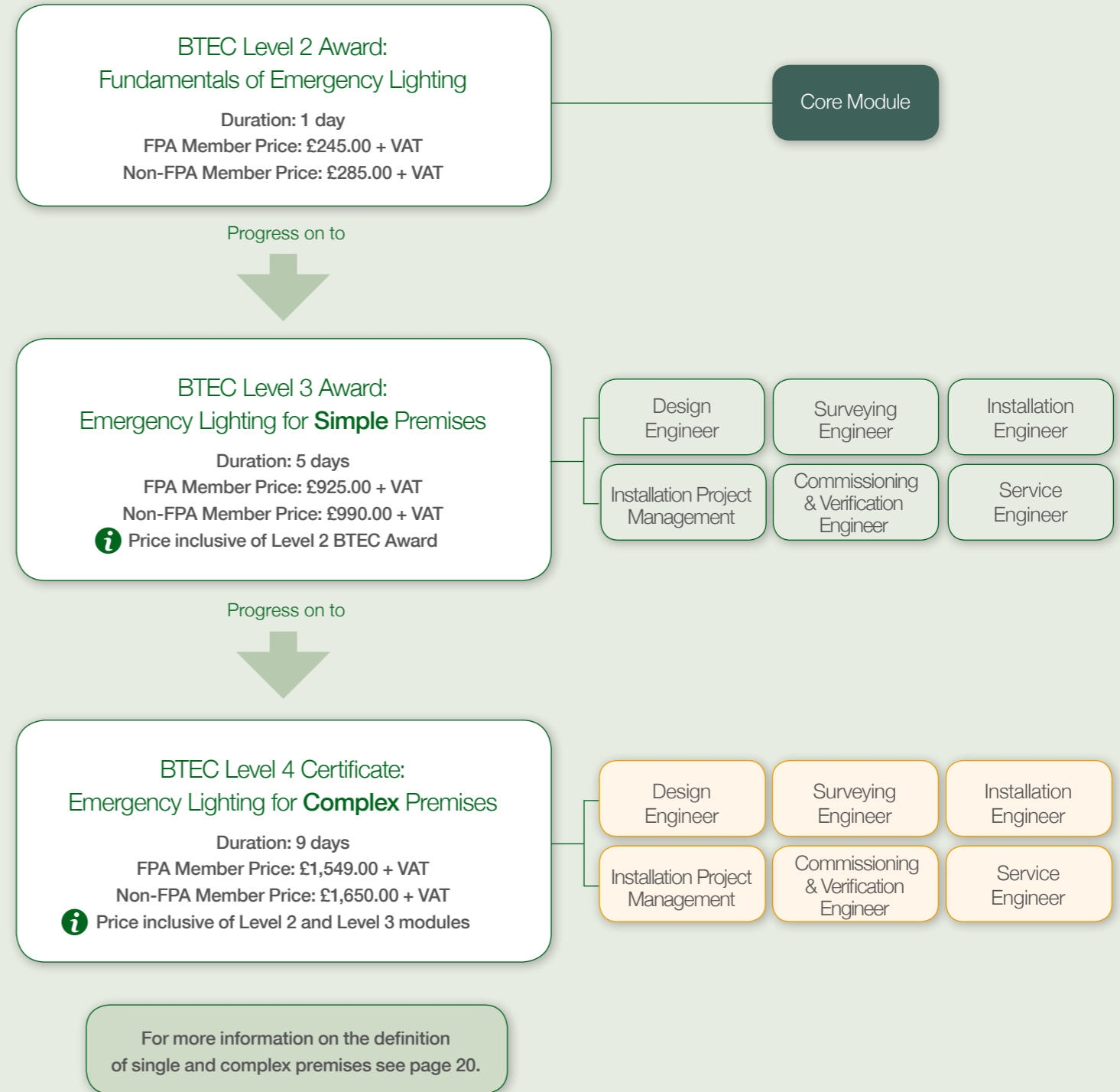
Website: www.thefpa.co.uk

By post: Fire Protection Association, London Road, Moreton in Marsh, Gloucestershire GL56 0RH

For more information on individual awards, see page 3.
For more information on the content and cost of individual modules referenced below, see pages 10–13.



For more information on individual awards, see page 3.
For more information on the content and cost of individual modules referenced below, see pages 24–27.



Steps to your pathway modules:

Step 1: Complete Core Module M1A

Step 2: Select your area of interest

Step 3: Choose a module and premises type

Key:

- Simple premises
- Complex premises

Definitions:

Simple workplace premises

The occupants:

- are/will be awake
- are/will be familiar with the premises

The premises:

- will contain no hazardous process or storage risks
- nor have significant numbers of occupants present (under 60 staff and under 300 persons in public access buildings)

Example: Office and industrial premises, small shops, classroom areas of schools and colleges

Complex workplace premises

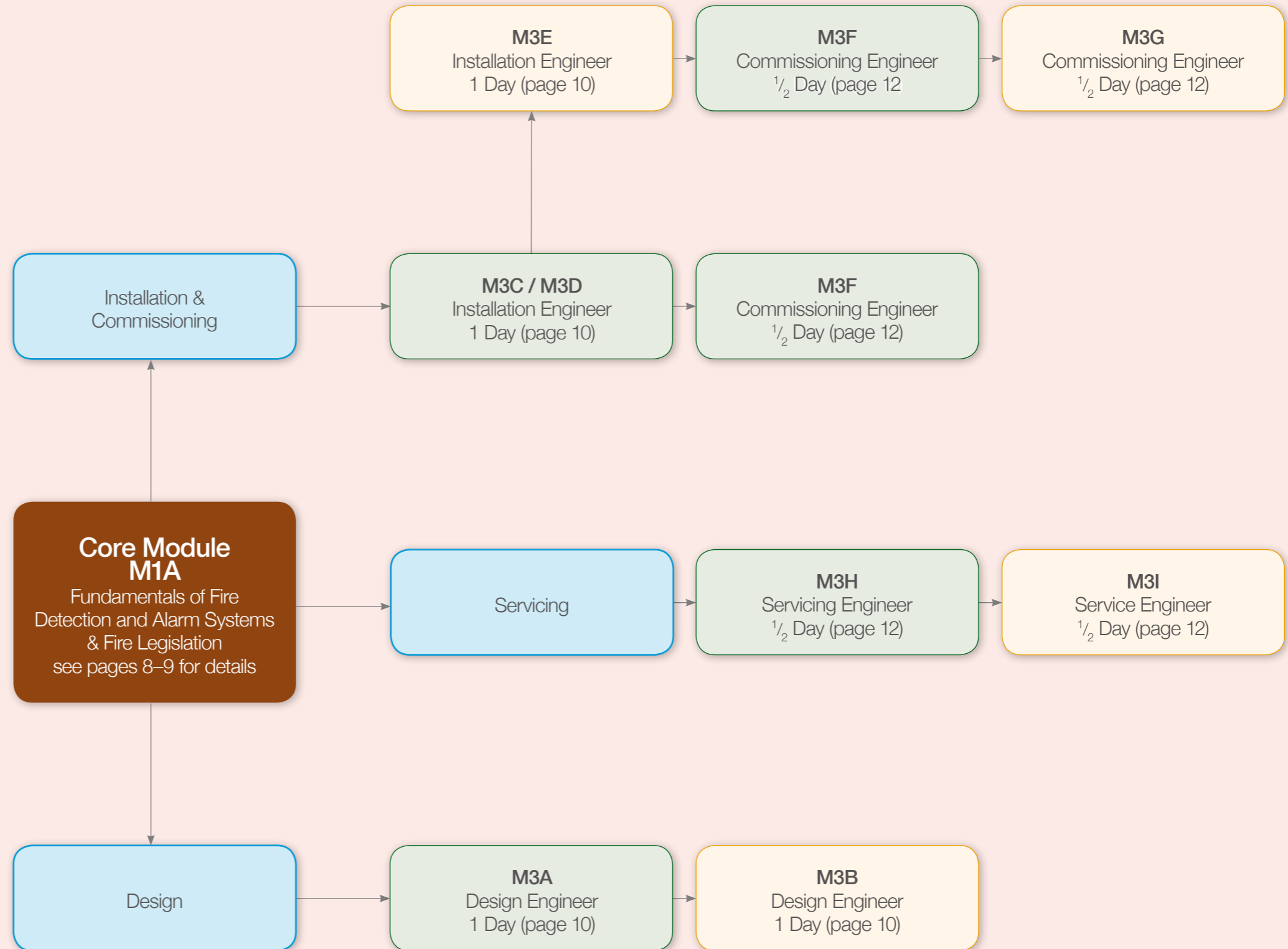
The occupants may:

- be asleep (other than single private dwelling house (SPDH) and blocks of individual flats)
- be unfamiliar with the premises

The premises may:

- contain hazardous process or storage risks
- cater for large numbers of occupants

Example: larger shops and shopping centres, museums, leisure centres, other large assembly buildings, halls of residence, sleeping areas and boarding schools, hotels, hospitals, care homes, manufacturing plants, railway stations, airports.



Fundamentals of Fire Detection & Alarm Systems

Overview

Fire detection and alarm systems are installed into virtually all commercial and industrial premises in the UK. However, despite their recognition they are frequently mismanaged, often creating unwanted alarms. It is therefore essential that those with responsibility for design, servicing, installation and management of these systems have an understanding of their operation and application.

The latest fire detection and alarm systems harness cutting edge technology to ensure that fires are detected faster and that any potential damage is minimised.

This new two day core module will focus on the legal requirements for fire detection systems and also provide an overview of the different components of fire alarm technology and their principles of operation.

The course provides a thorough understanding of the essentials of fire detection and alarm systems and delegates who successfully complete this module may choose to undertake further pathway modules covering the design, servicing and installation of such systems.



Who will benefit?

- those whose work requires them to have an appreciation of the installation and operation of fire detection and alarm systems
- maintenance/building services engineers
- architects and specifiers
- fire officers and fire engineers
- building control officers
- consulting engineers
- electrical contractors

Learning outcomes

You will develop:

- understanding of the legal framework regarding fire detection and alarm systems including the Fire Safety Order 2005 and similar legislation in Scotland and Ireland, Disability Discrimination Act and Electricity at Work Regulations
- knowledge of the different types of fire detection systems and latest alarm technology including their principles of operation
- understanding of the layout of a fire alarm system including specific references to power supplies, wiring and cabling
- appreciation of the testing and certification requirements
- an understanding of the differences between simple and complex premises

Programme

Course content will cover:

- legislation and regulations affecting fire detection and alarm systems
- general principles and terminology
- fundamentals of fire risk assessment
- principles of fire science
- smoke behaviour
- types of fire alarm systems and principles of operation
- types of detectors and how they work
- audible and visual alarms
- wiring and cabling of systems
- power supplies
- zoning
- testing and certification requirements
- false alarms
- schematics and design drawings
- responsibilities of the designer, installer, commissioner, servicing and maintenance staff

Assessment of learning

Knowledge will be continually assessed throughout each module using short tests and exercises to confirm levels of understanding

Certification

- Successful achievement of the in-course assessment will lead to an FPA/FSA Certificate. This course has been awarded 13 IFE CPD hours

Progression opportunities

- This course is a prerequisite for any individual wishing to take further pathway modules in the design, installation, commissioning or maintenance of fire detection and alarm systems. You can also progress onto a BTEC Award or Certificate.

Course Information

Duration: 2 days

FPA Members: £289.00 + VAT

Non-members: £329.00 + VAT

Price excludes the cost of accommodation.
ECA members are entitled to the FPA Member price.

Book online at
www.thefpa.co.uk



Pay 7 weeks in advance
and get **10% OFF!**

This course helped identify and close 'knowledge gaps'. I am better equipped to deal with consultations and design engineer meetings as a result.

Lloyd Morgan, Canterbury Christ Church University

Fire Detection & Alarm Systems for the Workplace

Pathway 1 Modules



All pathway modules are preceded by the core module on pages 8-9.

All courses are held at the FPA training venue, Moreton in Marsh. *ECA members are entitled to the FPA member price. All prices stated here relate to standalone courses without BTEC qualification.

Course Code & Title	Who will benefit	Learning outcomes	Programme	Duration	Cost*	Certification
M3A Design Engineer	Designers of simple, conventional premises. Those with prior knowledge of BS 7671.	This course develops knowledge of BS 5839 Part 1. You will complete associated design exercises.	<p>The course will:</p> <ul style="list-style-type: none"> • apply the core module to design in simple, conventional premises <p>and also cover:</p> <ul style="list-style-type: none"> • sections 1, 2, 3 and 5 to include interfacing, false alarms and certification • interpretation of different types of architectural plans and symbols 	1 day	FPA Members £149 +VAT Non-members £189 +VAT	Design Engineer for Fire Detection & Alarm Systems in Simple Workplace Premises
M3B Design Engineer	Designers of complex premises including analogue addressable systems. Those who have completed M3A Designer or equivalent.	This course develops knowledge of BS 5839 Parts 1, 8 and 9; BS 7273 and BS 6266. You will complete associated design exercises.	<p>The course will:</p> <ul style="list-style-type: none"> • apply the core module to design in complex premises • extend learning from M3A <p>and also cover:</p> <ul style="list-style-type: none"> • review and reinforcement of radio and networks • protocols - closed and open systems • computer suites; IT • hazardous areas • BS 9999 	1 day	FPA Members £149 +VAT Non-members £189 +VAT	Design Engineer for Fire Detection & Alarm Systems in Complex Workplace Premises
M3C Installation Engineer	Those who want to understand the basics of systems installation; must have completed the C&G 2351/2360/2330 or equivalent.	This course develops knowledge of BS 5839 Part 1; learning is formally assessed.	<p>The course will:</p> <ul style="list-style-type: none"> • apply the core module to installation in simple, conventional premises <p>and also cover:</p> <ul style="list-style-type: none"> • practice and workmanship • responsibilities of the installer • reading building plans • cabling 	1/2 day	FPA Members £79 +VAT Non-members £99 +VAT	Installation Engineer for Fire Detection & Alarm Systems in Simple Workplace Premises
M3D Installation Engineer	Those who want to develop competence as an installation engineer in simple premises; must have completed M3C Installer or equivalent for approved electricians.	This course builds upon M3C Installer developing more in-depth knowledge of BS 5839 Part 1.	<p>The course will:</p> <ul style="list-style-type: none"> • apply the core module to installation in simple, conventional premises • extend learning from M3C <p>and also cover:</p> <ul style="list-style-type: none"> • inspection and testing • certification • programming for analogue systems 	1/2 day	FPA Members £79 +VAT Non-members £99 +VAT	Installation Engineer for Fire Detection & Alarm Systems in Simple Workplace Premises
M3E Installation Engineer	Those who want to develop competence as an installation engineer working on more complex premises; must have completed M3D Installer or equivalent.	This course builds upon M3C and M3D Installer, developing more in-depth knowledge of BS 5839 Part 1 plus Parts 8, 9 and BS 6266. Learning is formally assessed.	<p>The course will:</p> <ul style="list-style-type: none"> • apply the core module to installation in complex premises • extend learning from M3D <p>and also cover:</p> <ul style="list-style-type: none"> • co-operation with other systems • actuations • hazard areas • data networks • interconnections i.e. lifts, maglocks, access control, ARC connections, sprinklers 	1 day	FPA Members £149 +VAT Non-members £189 +VAT	Installation Engineer for Fire Detection & Alarm System in Complex Workplace Premises

Fire Detection & Alarm Systems for the Workplace

Pathway 1 Modules



All pathway modules are preceded by the core module on pages 8–9.

All courses are held at the FPA training venue, Moreton in Marsh. *ECA members are entitled to the FPA member price. All prices stated here relate to standalone courses without BTEC qualification.

Course Code & Title	Who will benefit	Learning outcomes	Programme	Duration	Cost*	Certification
M3F Commissioning Engineer	Those who wish to be competent installation engineers for simple premises; must have completed M3D Installer or equivalent.	This course further develops knowledge of BS 5839 Part 1. Learning is assessed via a case study activity.	<p>The course will:</p> <ul style="list-style-type: none"> • apply the core module to commissioning in simple, conventional premises • extend learning from M3D <p>and also cover:</p> <ul style="list-style-type: none"> • the design certificate, install certificate and 'as fitted' drawing • commission, certification, acceptance, verification process and documentation • user handbook 	1/2 day	<p>FPA Members £79 +VAT</p> <p>Non-members £99 +VAT</p>	Commissioning Engineer for Fire Detection & Alarm Systems in Simple Workplace Premises
M3G Commissioning Engineer	Those who wish to be competent installation engineers for complex premises; must have completed M3E Installer and M3F Commissioner or equivalent.	This course reinforces and adds to knowledge of BS 5839 Part 1. Learning is formally assessed.	<p>The course will:</p> <ul style="list-style-type: none"> • apply the core module to commissioning in complex premises • extend learning from M3F <p>and also cover:</p> <ul style="list-style-type: none"> • device and address • cause and effect • BS 5839 Part 1 S5 in detail 	1/2 day	<p>FPA Members £79 +VAT</p> <p>Non-members £99 +VAT</p>	Commissioning Engineer for Fire Detection & Alarm Systems in Complex Workplace Premises
M3H Service Engineer	Those who want to be able to service systems for simple premises; should have previously completed an electrical safety module i.e. Safe Isolation.	This course further develops knowledge of BS 5839 Part 1. Learning is formally assessed.	<p>The course will:</p> <ul style="list-style-type: none"> • apply the core module to servicing in simple, conventional premises <p>and also cover:</p> <ul style="list-style-type: none"> • 'as fitted' drawings, handbook • test equipment (excluding weekly) • section 6 including documentation and certification • false alarms reporting 	1/2 day	<p>FPA Members £79 +VAT</p> <p>Non-members £99 +VAT</p>	Service Engineer for Fire Detection & Alarm Systems in Simple Workplace Premises
M3I Service Engineer	Those who want to be able to service systems for complex premises; must have completed M3H Servicing or equivalent.	This course reinforces and adds to knowledge of BS 5839 Part 1. Learning is formally assessed.	<p>The course will:</p> <ul style="list-style-type: none"> • apply the core module to servicing in complex premises • extend learning from M3H <p>and also cover:</p> <ul style="list-style-type: none"> • false alarm monitoring, cause and effect, liaison • panel interface • periodic interval assessment • battery back-up systems (vented) 	1/2 day	<p>FPA Members £79 +VAT</p> <p>Non-members £99 +VAT</p>	Service Engineer for Fire Detection & Alarm Systems in Complex Workplace Premises

Steps to your pathway modules:

Step 1: Complete Core Module M1A

Step 2: Select your area of interest

Step 3: Choose a module and dwellings type

Key:

- Simple premises
- Complex premises

Definitions:

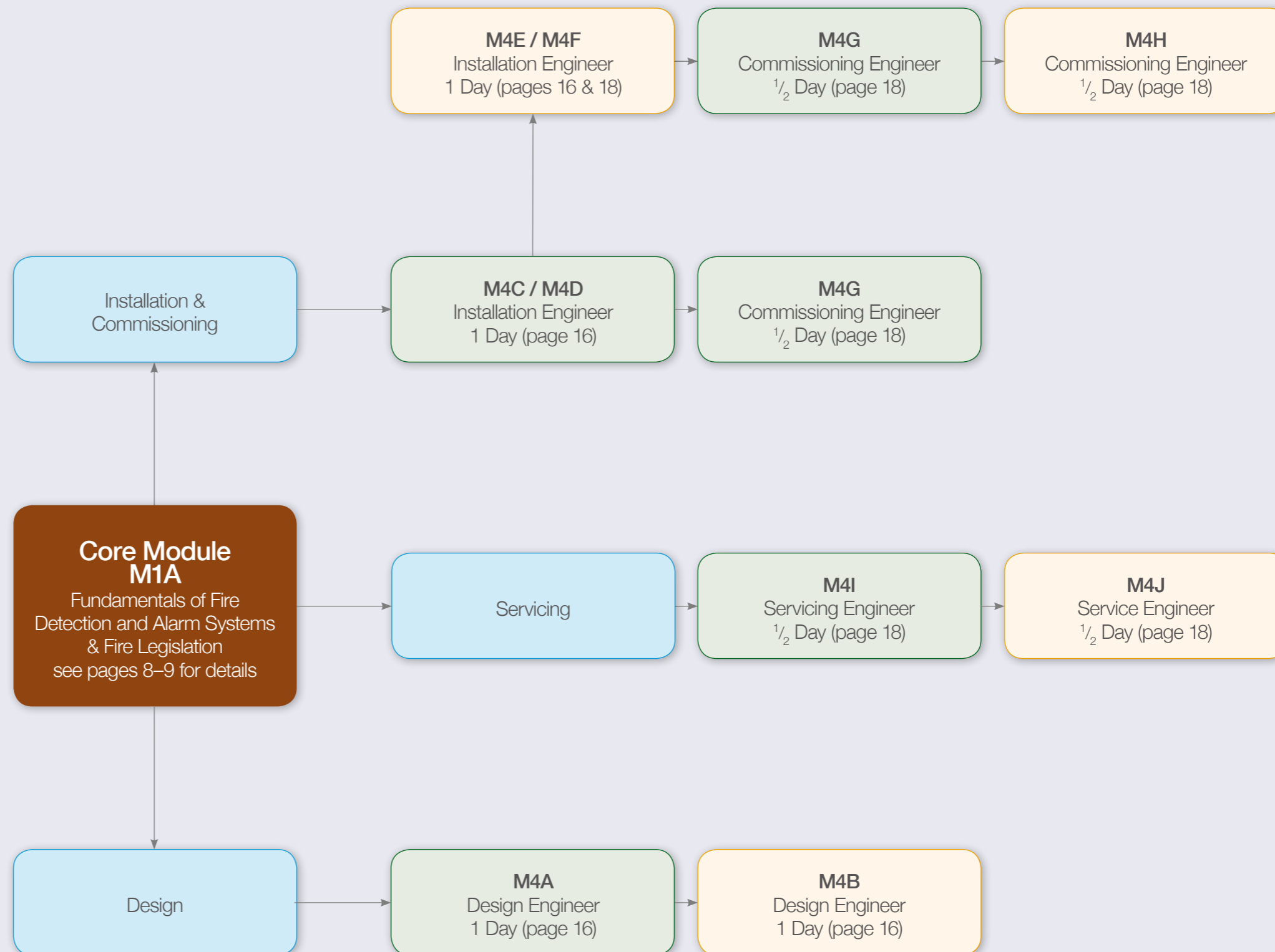
Simple domestic dwellings

- single dwelling houses or shared housing with a floor area no greater than 200m² per floor

Complex domestic dwellings

The occupants may:

- dwelling houses or shared housing with a floor area per storey greater than 200m² and 3 storeys or more;
- common areas of HMOs; NHS supported houses with either more than 6 residents and/or more than 3 storeys



Fire Detection & Alarm Systems for Dwellings

Pathway 2 Modules



All pathway modules are preceded by the core module on pages 8–9.

All courses are held at the FPA training venue, Moreton in Marsh. *ECA members are entitled to the FPA member price. All prices stated here relate to standalone courses without BTEC qualification.

Course Code & Title	Who will benefit	Learning outcomes	Programme	Duration	Cost*	Certification
M4A Design Engineer	Design Engineers who design fire alarm installations for simple, domestic premises. Those with prior knowledge of BS 7671.	This course develops the knowledge of designers of fire alarm installation for dwelling houses to BS 5839 Part 6. You will complete associated design exercises.	The course will: <ul style="list-style-type: none"> • apply the core module to simple domestic dwellings and also cover: <ul style="list-style-type: none"> • verification and certification • interpretation of product data 	1 day	FPA Members £149 +VAT Non-members £189 +VAT	Design Engineer for Fire Detection & Alarm Systems in Simple Domestic Dwellings
M4B Design Engineer	Designer Engineers who design fire alarm installations for complex domestic premises. Those who have completed M4A Designer or equivalent.	This course builds on previous knowledge of installation and develops understanding of design principles, operation and technology of domestic fire alarm systems in complex dwellings. You will complete associated design exercises.	The course will: <ul style="list-style-type: none"> • apply the core module to complex domestic dwellings • extend learning from M4A and also cover: <ul style="list-style-type: none"> • domestic sprinkler systems • radio linked systems • networked systems • BS 5839 Part 1 requirements • mixed systems • BS 9999 	1 day	FPA Members £149 +VAT Non-members £189 +VAT	Design Engineer for Fire Detection & Alarm Systems in Complex Domestic Dwellings
M4C Installation Engineer	Installation Engineers who want to understand the basics of fire alarm installations for simple, domestic premises. Those with prior knowledge of BS 7671; must have completed the C&G 2351/2360/2330 or equivalent.	This course develops knowledge of the installation of fire alarms in simple dwelling houses to BS 5839 Part 6.	The course will: <ul style="list-style-type: none"> • apply the core module to installation in simple, domestic dwellings and also cover: <ul style="list-style-type: none"> • practice and workmanship • test equipment 	1/2 day	FPA Members £149 +VAT Non-members £189 +VAT	Installation Engineer for Fire Detection & Alarm Systems in Simple Domestic Dwellings
M4D Installation Engineer	Those who want to develop competence as an installation engineer in simple domestic premises; must have completed M4C Installer or equivalent; for approved electricians.	This course develops depth of knowledge of installations in simple dwelling houses to BS 5839 Part 6.	The course will: <ul style="list-style-type: none"> • apply the core module to installation in simple, domestic dwellings premises • extend learning from M4C and also cover: <ul style="list-style-type: none"> • electrical verification • advanced testing and certification requirements • systems installed in premises with conversions 	1/2 day	FPA Members £79 +VAT Non-members £99 +VAT	Installation Engineer for Fire Detection & Alarm Systems in Simple Domestic Dwellings
M4E Installation Engineer	Those who want to understand the basics of installation of fire alarms for complex dwellings. Those who have prior knowledge of BS 7671 and have completed M4C Installer.	This course builds on M4C Installers and introduces and develops knowledge of BS 5839 Part 6 including fire alarm technology of domestic systems in complex dwellings.	The course will: <ul style="list-style-type: none"> • apply the core module to installation in complex domestic dwellings • extend learning from M4C and also cover: <ul style="list-style-type: none"> • verification and certification • electrical verification and certification • complex building structures and plans • domestic sprinkler systems • BSE systems • radio linked systems • networked systems • mixed systems • BS 5839 Part 1 requirements 	1/2 day	FPA Members £79 +VAT Non-members £99 +VAT	Installation Engineer for Fire Detection & Alarm Systems in Complex Domestic Dwellings

Fire Detection & Alarm Systems for Dwellings

Pathway 2 Modules



All pathway modules are preceded by the core module on pages 8–9.

All courses are held at the FPA training venue, Moreton in Marsh. *ECA members are entitled to the FPA member price. All prices stated here relate to standalone courses without BTEC qualification.

Course Code & Title	Who will benefit	Learning outcomes	Programme	Duration	Cost*	Certification
M4F Installation Engineer	Those who want to develop competence as an installation engineer working on more complex premises; must have completed M4D Installer or equivalent.	This course further develops the knowledge of installers of BS 5839 Part 6, including fire alarm technology of domestic systems in complex dwellings.	<p>The course will:</p> <ul style="list-style-type: none"> • apply the core module to installation in complex domestic dwellings • extend learning from M4C and M4D <p>and also cover:</p> <ul style="list-style-type: none"> • verification and certification • complex building structures and plans • health and safety supervision • domestic sprinkler systems • BSE systems • radio linked systems • mixed systems • BS 5839 Part 1 requirements 	1/2 day	FPA Members £79 +VAT Non-members £99 +VAT	Installation Engineer for Fire Detection & Alarm Systems in Complex Domestic Dwellings
M4G Commissioning Engineer	Those who wish to be competent installation engineers for simple premises; must have completed M4D Installer or equivalent.	This course develops knowledge of installation for engineers wishing to advance to commissioning. It builds on previous knowledge of BS 5839 Part 6 and introduces basic design aspects of commissioning practices and procedures for domestic fire alarm systems in simple dwellings.	<p>The course will:</p> <ul style="list-style-type: none"> • apply the core module to commissioning in simple domestic dwellings • extend learning from M4D <p>and also cover:</p> <ul style="list-style-type: none"> • verification and certification • electrical verification and certification • relevant parts of BS 5839 Part 1 • fundamentals of fire alarm design • 'as fitted' drawings • documentation; building log books 	1/2 day	FPA Members £79 +VAT Non-members £99 +VAT	Commissioning Engineer for Fire Detection & Alarm Systems in Simple Domestic Dwellings
M4H Commissioning Engineer	Those who wish to be competent installation engineers for complex premises; must have completed M4F Installer and M4G Commissioner or equivalent.	This course builds on previous knowledge of commissioning and BS 5839 Part 6. It develops understanding of design principles, commissioning practices and procedures for domestic fire alarm systems in complex dwellings.	<p>The course will:</p> <ul style="list-style-type: none"> • apply the core module to commissioning in complex domestic dwellings • extend learning from M4F and M4G <p>and also cover:</p> <ul style="list-style-type: none"> • advanced testing, verification and certification requirements • advanced fire alarm design • BS 5839 Part 1 requirements 	1/2 day	FPA Members £79 +VAT Non-members £99 +VAT	Commissioning Engineer for Fire Detection & Alarm Systems in Complex Domestic Dwellings
M4I Service Engineer	Those who want to be able to service systems for simple domestic dwellings; should have previously completed an electrical safety module i.e. Safe Isolation.	This course introduces knowledge of the servicing requirements of fire alarm systems in simple dwellings.	<p>The course will:</p> <ul style="list-style-type: none"> • apply the core module to servicing in simple domestic dwellings • extend learning from M4D <p>and also cover:</p> <ul style="list-style-type: none"> • reading schematics and drawings • service records and documentation • false alarm reporting 	1/2 day	FPA Members £79 +VAT Non-members £99 +VAT	Service Engineer for Fire Detection & Alarm Systems in Simple Domestic Dwellings
M4J Service Engineer	Those who want to be able to service systems for complex domestic dwellings; must have completed M4I Servicing or equivalent.	This course introduces new topics and further develops knowledge of BS 5839 Part 6 service requirements for domestic systems in complex dwellings.	<p>The course will:</p> <ul style="list-style-type: none"> • apply the core module to servicing in complex domestic dwellings • extend learning from M4I <p>and also cover:</p> <ul style="list-style-type: none"> • advanced testing and certification requirements • verification and certification • cause and effect of false alarms • BS 5839 Part 1 requirements 	1/2 day	FPA Members £79 +VAT Non-members £99 +VAT	Service Engineer for Fire Detection & Alarm Systems in Complex Domestic Dwellings

Steps to your pathway modules:

Step 1: Complete Core Module M1A

Step 2: Select your area of interest

Step 3: Choose a module and premises type

Key:

- Simple premises
- Complex premises

Definitions:

Simple workplace premises

The occupants:

- are/will be awake
- are/will be familiar with the premises

The premises:

- will contain no hazardous process or storage risks
- nor have significant numbers of occupants present (under 60 staff and under 300 persons in public access buildings)

Example: Office and industrial premises, small shops, classroom areas of schools and colleges

Complex workplace premises

The occupants may:

- be asleep (other than single private dwelling house (SPDH) and blocks of individual flats)
- be unfamiliar with the premises

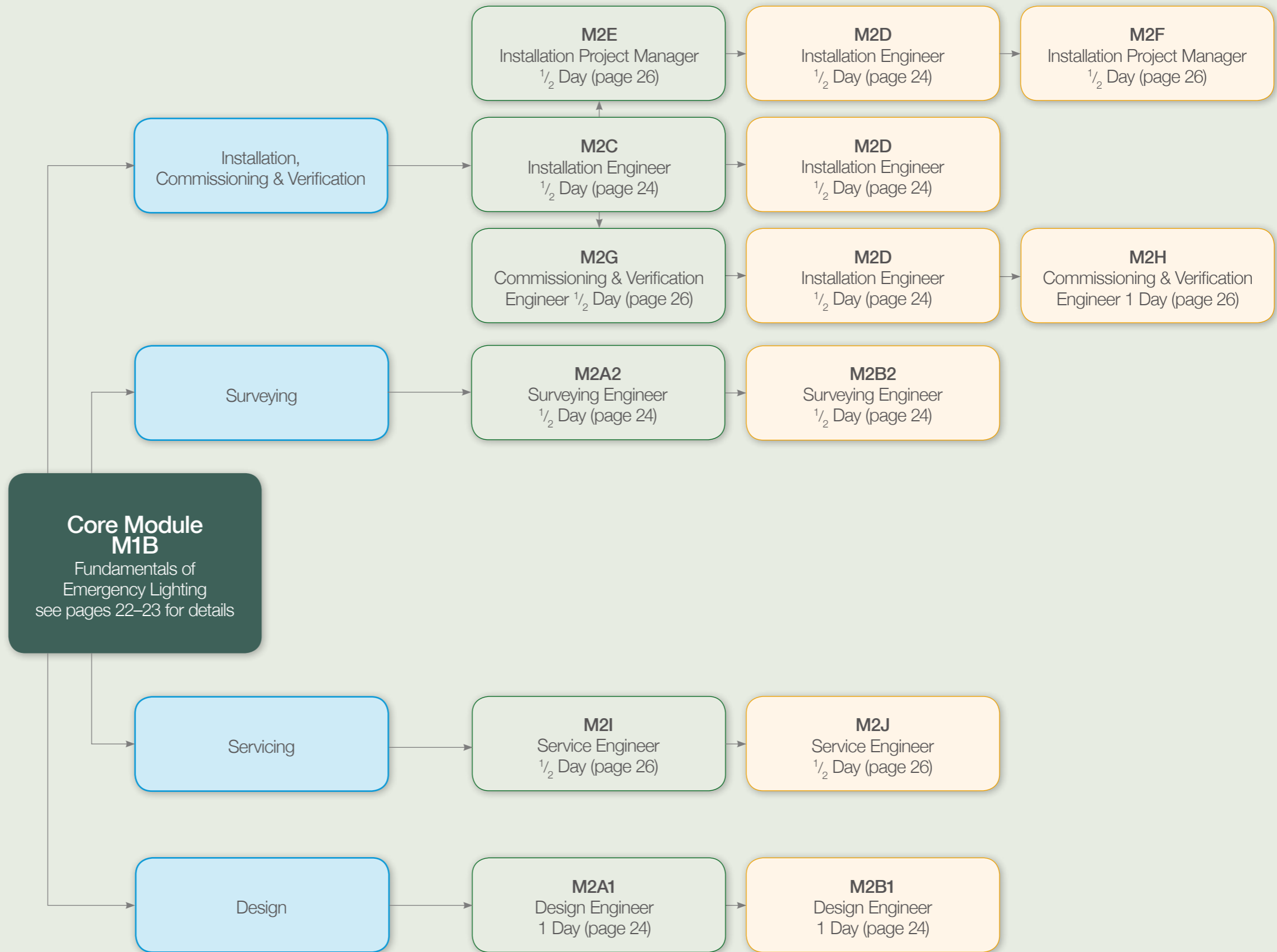
The premises may:

- contain hazardous process or storage risks
- cater for large numbers of occupants

Example: larger shops and shopping centres, museums, leisure centres, other large assembly buildings, halls of residence, sleeping areas and boarding schools, hotels, hospitals, care homes, manufacturing plants, railway stations, airports.

Complex domestic dwellings

- dwelling houses or shared housing with a floor area per storey greater than 200m² and 3 storeys or more;
- common areas of HMOs; NHS supported houses with either more than 6 residents and/or more than 3 storeys



Fundamentals of Emergency Lighting & Fire Legislation

Overview

All workplaces covered by the UK Fire Legislation have a requirement to safeguard the 'safety of relevant persons.' The legislation also states that 'emergency routes and exits requiring illumination must be provided with emergency lighting of adequate intensity in the case of failure of their normal lighting.' Approved Document B to the Building Regulations provides guidance as to when emergency lighting is necessary to satisfy this requirement.

This one day course will focus on the legal requirements for emergency lighting systems and also provide a review of the types of emergency lighting products and components and their principles of operation.

The course provides thorough coverage of the basics of emergency lighting and delegates who have successfully achieved this module may choose to undertake further pathway modules regarding the design, surveying, maintenance and installation of such systems.



Who will benefit?

- those whose work requires them to have an appreciation of the installation and operation of emergency lighting systems
- facilities managers
- architects and specifiers
- fire officers
- building control officers
- fire and rescue personnel
- building services engineers
- electrical contractors

Learning outcomes

You will develop:

- understanding of the legal framework requiring emergency lighting including the Fire Safety Order 2005 and Approved Document B
- an awareness of the different types of emergency lighting equipment including luminaire types, systems and linked addressable systems
- knowledge of British and European standards including correct locations of emergency lighting systems and of illuminance levels
- an appreciation of how to service and test such systems
- an awareness of risk analysis

Programme

The course includes:

- lighting principles, light distribution and its effects
- legislation and regulations affecting emergency lighting
- general principles and terminology
- classification of escape routes and areas
- emergency lighting systems, types and principles of operations
- requirements for fire safety signs
- current emergency lighting standards, codes of practice and their general requirements
- ICEL guidance
- wiring systems
- sources of photometric data and how it is used
- basics of central emergency power systems
- fundamentals of testing and certification
- automatic testing systems
- maintenance requirements
- risk analysis concepts and principles

Assessment of learning

Knowledge will be continually assessed throughout each module using short tests and exercises to confirm levels of understanding

Certification

- Successful achievement of the in-course assessment will lead to an FPA/FSA Certificate.
- This course has been awarded 13 IFE CPD hours

Progression opportunities

- This course is a prerequisite for any individual wishing to take further pathway modules in the design, installation, commissioning or maintenance of fire detection and alarm systems. You can also progress onto a BTEC Award or Certificate.

I found the course to be extremely useful. The tutor was obviously very knowledgeable in the subject area. He delivered the course content in a professional manner.

John Pearce - Hochiki Europe Ltd

Course Information

Duration: 1 day

FPA Members: £149.00 + VAT

Non-members: £189.00 + VAT

ECA members are entitled to the FPA Member price.

Book online at
www.thefpa.co.uk

Early
Bird
Discount!

Pay 7 weeks in advance
and get **10% OFF!**



Emergency Lighting Pathway 3 Modules



All pathway modules are preceded by the core module on pages 22-23.

All courses are held at the FPA training venue, Moreton in Marsh. *ECA members are entitled to the FPA member price. All prices stated here relate to standalone courses without BTEC qualification.

Course Code & Title	Who will benefit	Learning outcomes	Programme	Duration	Cost*	Certification
M2A1 Design Engineer	Designers of conventional EL installations in simple premises. Those with prior knowledge of BS 7671.	This course develops knowledge of BS 5266 Parts 1, 7 and 8 and the basic principles, operation and technology of EL systems. You will complete associated design exercises.	The course will: <ul style="list-style-type: none"> • apply core module to design of simple, conventional premises and also cover: <ul style="list-style-type: none"> • schematics • building structures and architectural plans • interfaces with BMS • environmental considerations 	1 day	FPA Members £149 +VAT Non-members £189 +VAT	Design Engineer for Emergency Lighting in Simple Premises
M2A2 Surveying Engineer	Surveyors of conventional EL Installations in simple premises. Those with prior knowledge of BS 7671.	This course develops knowledge of BS 5266 Parts 1, 7 and 8 and the basic principles, operation and technology of EL systems. Completion of risk assessment exercise is included.	The course will: <ul style="list-style-type: none"> • apply the core module to surveying of simple, conventional premises and also cover: <ul style="list-style-type: none"> • emergency lighting risk analysis concepts and principles • risk analysis of installations in simple types of premises • risk assessment checklist, completion & inspection certificates 	1/2 day	FPA Members £79 +VAT Non-members £99 +VAT	Survey Engineer for Emergency Lighting in Simple Premises
M2B1 Design Engineer	Designers of systems for complex premises and those who have completed M2A Designer or equivalent.	This course develops knowledge of BS 5266 Parts 1, 7 and 8. You will complete associated design exercises.	The course will: <ul style="list-style-type: none"> • apply the core module to designing for complex premises • extend learning from M2A and also cover: <ul style="list-style-type: none"> • hazardous areas • multi building complexes/sites • high occupancy premises, HMOs, hotels, hospitals, factories • radio linked systems 	1 day	FPA Members £149 +VAT Non-members £189 +VAT	Design Engineer for Emergency Lighting in Complex Premises
M2B2 Surveying Engineer	Surveyors of complex premises and those who have completed M2A Surveyor or equivalent.	This course develops knowledge of BS 5266 Parts 1, 7 and 8; Completion of risk assessment exercise.	The course will: <ul style="list-style-type: none"> • apply the core module to surveying in complex premises • extend learning from M2A Surveying and also cover: <ul style="list-style-type: none"> • risk analysis of installations in complex types of premises • risk assessment checklist, completion and inspection certificates for complex premises • centrally supplied EL Battery systems • system comparisons • BS 50272-2 Working on DC systems 	1/2 day	FPA Members £79 +VAT Non-members £99 +VAT	Survey Engineer for Emergency Lighting in Complex Premises
M2C Installation Engineer	Installers of conventional EL installations in simple premises. Those with prior knowledge of BS 7671; must have completed C&G 2351/2360/2330 or equivalent.	This course develops knowledge of EL installers in BS 5266 Parts 1, 7 and 8 and the basic principles, operation and technology of EL systems.	The course will: <ul style="list-style-type: none"> • apply the core module to installation of systems in simple, conventional premises and also cover: <ul style="list-style-type: none"> • comparison of system types • schematics • site documentation • self contained luminaires and conversions 	1/2 day	FPA Members £79 +VAT Non-members £99 +VAT	Installation Engineer for Emergency Lighting in Simple Premises
M2D Installation Engineer	Installers of conventional EL installations in complex premises. Those who have prior knowledge of BS 7671. Those who have completed module M2C Installer or equivalent.	This course develops knowledge of installers in EL systems, BS 5266 Part 1, 7 and 8, introduces Parts 2, 4 and 6 and the operation and technology of EL systems in complex premises.	The course will: <ul style="list-style-type: none"> • apply the core module to installation complex premises • extend learning from M2C and also cover: <ul style="list-style-type: none"> • hazardous areas • multi building complexes/sites • high occupancy premises, HMOs, hotels, hospitals, factories • automatic testing systems • safety & BSEN 62034 • radio linked systems 	1/2 day	FPA Members £79 +VAT Non-members £99 +VAT	Installation Engineer for Emergency Lighting in Complex Premises

Emergency Lighting Pathway 3 Modules



All pathway modules are preceded by the core module on pages 22-23.

All courses are held at the FPA training venue, Moreton in Marsh. *ECA members are entitled to the FPA member price. All prices stated here relate to standalone courses without BTEC qualification.

Course Code & Title	Who will benefit	Learning outcomes	Programme	Duration	Cost*	Certification
M2E Installation Project Manager	Installation Project Managers who manage the commissioning and verification of conventional EL installations in simple premises. Those with prior knowledge of BS 7671. Those who have completed M2C Installer or equivalent.	This course develops knowledge of managing EL installation projects and reinforces EL installation, knowledge of BS 5266 Parts 1, 7 and 8.	The course will: <ul style="list-style-type: none"> • apply the core module to installation project management of simple, conventional premises • extend learning from M2C and also cover: <ul style="list-style-type: none"> • EL products & components comparisons • building structures & architectural plans 	1/2 day	FPA Members £79 +VAT Non-members £99 +VAT	Installation Project Manager for Emergency Lighting in Simple Premises
M2F Installation Project Manager	Installation Project Managers who manage the commissioning and verification of EL installations in complex premises. Those with prior knowledge of BS 7671. Those who have completed M2D and M2E Installer or equivalent.	This course builds on and develops knowledge of managing EL installation projects and installation and reinforces EL knowledge of BS 5266 Parts 1, 7 and 8 and introduces Parts 2, 4 and 6.	The course will: <ul style="list-style-type: none"> • apply the core module to installation project management of complex premises • extend learning from M2D and M2E and also cover: <ul style="list-style-type: none"> • testing principles • radio linked systems • site documentation • interface with BMS and FM software systems 	1/2 day	FPA Members £79 +VAT Non-members £99 +VAT	Installation Project Manager for Emergency Lighting in Complex Premises
M2G Commissioning and Verification Engineer	Commissioning and Verification Engineers who commission and verify EL installations in simple premises. Those with prior knowledge of BS 7671. Those who have completed M2C Installer.	This course develops knowledge of commissioning and verification of EL installations, reinforces EL knowledge of BS 5266-1, 7, and 8 and develops understanding of EL systems and design.	The course will: <ul style="list-style-type: none"> • apply the core module to commissioning and verification of simple, conventional premises • extend learning from M2C and also cover: <ul style="list-style-type: none"> • design principles • limitations of EL products & systems • EL risk assessment • building structures, architectural plans • verification 	1/2 day	FPA Members £79 +VAT Non-members £99 +VAT	Commissioning and Verification Engineer for Emergency Lighting in Simple Premises
M2H Commissioning and Verification Engineer	Commissioning and Verification Engineers who commission and verify EL installations in complex premises. Those with prior knowledge of BS 7671. Those who have completed M2D Installer and M2G Commissioner or equivalent.	This course further develops and builds on knowledge of commissioning and verifying EL installations, reinforcing EL knowledge of BS 5266 Part 1 and introduces BS 5266 Parts 2, 4 and 6.	The course will: <ul style="list-style-type: none"> • apply the core module to commission and verification of installations in complex premises • extend learning from M2D and M2G and also cover: <ul style="list-style-type: none"> • BS 5266 Parts 2, 4 & 6 • system testing principles and automatic testing systems • interface with BMS and FM software 	1 day	FPA Members £149 +VAT Non-members £189 +VAT	Commissioning and Verification Engineer for Emergency Lighting in Complex Premises
M2I Service Engineer	Service Engineers who service conventional EL installations in simple premises; should have previously completed an electrical safety module i.e. Safe Isolation.	This course develops knowledge of EL in BS 5266 Parts 1, 7 and 8 and introduces the servicing of EL systems in simple premises. Practical risk assessment examples and exercises will be completed.	The course will: <ul style="list-style-type: none"> • apply the core module to servicing of simple premises and also cover: <ul style="list-style-type: none"> • servicing of mains lighting luminaires • risk assessment of servicing activity and premises • routine maintenance schedules, testing and certification • finding, interpreting and using suitable product installation data • verification 	1/2 day	FPA Members £79 +VAT Non-members £99 +VAT	Service Engineer for Emergency Lighting in Simple Premises
M2J Service Engineer	Service Engineers who service EL installations in complex premises. Those with prior knowledge of BS 7671. Those who have completed module M2I Servicing or equivalent.	This course develops knowledge of EL Service Engineers in BS 5266 Part 1 plus 2, 4 and 6 and builds on module M2I.	The course will: <ul style="list-style-type: none"> • apply the core module to servicing of complex premises • extend learning from M2I and also cover: <ul style="list-style-type: none"> • EL design • system testing principles and automatic testing systems • radio linked systems 	1/2 day	FPA Members £99 +VAT Non-members £99 +VAT	Service Engineer for Emergency Lighting in Complex Premises

Booking Form



Fire Protection Association



Please photocopy and post or fax this form to:
 Fire Protection Association, London Road, Moreton in Marsh, Gloucestershire GL56 0RH
 Tel: +44(0)1608 812 500 Fax: +44(0)1608 812 501 Email: training@thefpa.co.uk www.thefpa.co.uk

Customer Details

Your name	
Position	Company
Address	
Postcode	
Telephone	E-mail
Date of Birth (BTEC only)	FPA Membership Number

Course Details

Module Code	Module Title	Date of Course	Cost of Course / BTEC Qualification
Additional Information, e.g. dietary requirements or disabilities:		Total fees	£
		VAT	£
		TOTAL	£

Payment Details (Tick Box)

Enclosed is a cheque for the total cost of the order (payable to Fire Protection Association)

Please invoice. Our purchase order no is _____ (if applicable)

Please debit card A/C no

Name on card _____ Issue No (Switch only)

Valid from / Expiry date / Security number (last three digits on reverse of card)

Please indicate card type VISA / SWITCH / SOLO / MASTERCARD / DELTA / MAESTRO

Please sign to confirm you have read our terms and conditions (available at www.thefpa.co.uk) and agree to adhere to them.

Signed: _____ **Date:** _____

TAVCOM TRAINING

Award Winning Security Systems Training Courses



- CCTV
- Network IP
- Control Rooms
- Intruder Alarms
- Access Control
- Fire Alarms
- Management
- Installation
- Operation
- Repair
- Maintenance
- Design
- Planning
- Consultancy
- BTEC
- City & Guilds
- Diplomas
- Distance Learning



Tel: **01489 895099**
 Fax: **01489 894400**
 Email: sales@tavcom.com
 Web: www.tavcom.com



FPA Academy is a new e-learning resource for companies and individuals who want flexible access to knowledge and support across a wide range of fire safety topics.

Visit www.fpaacademy.co.uk





Head Office

Fire Protection Association
London Road
Moreton in Marsh
Gloucestershire
GL56 0RH

T: +44 (0)1608 812 500
F: +44 (0)1608 812 501
E: training@thefpa.co.uk
www.thefpa.co.uk



INVESTOR IN PEOPLE